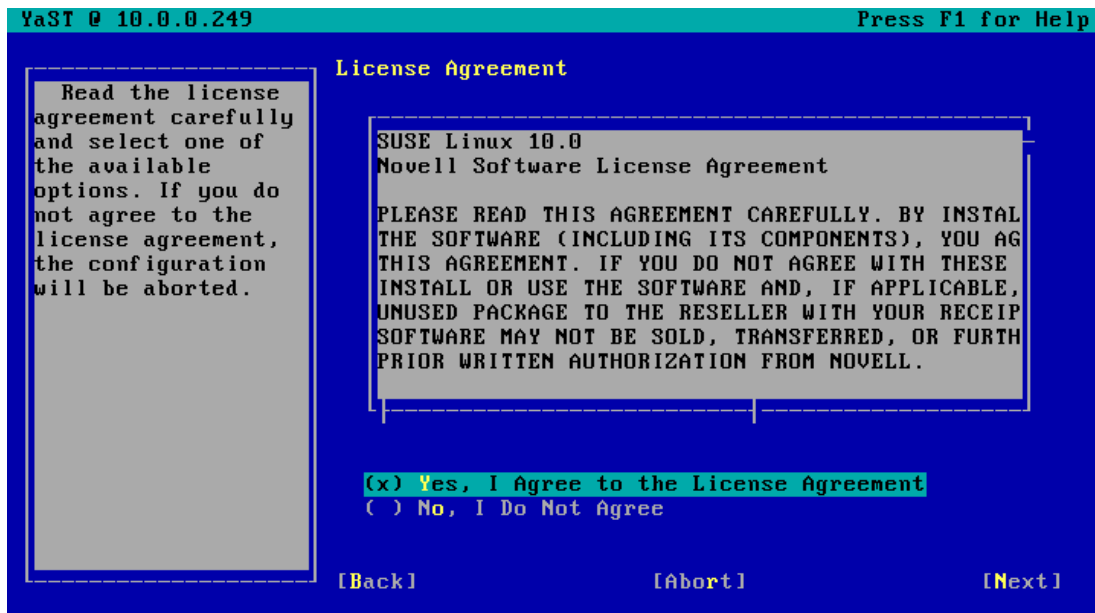


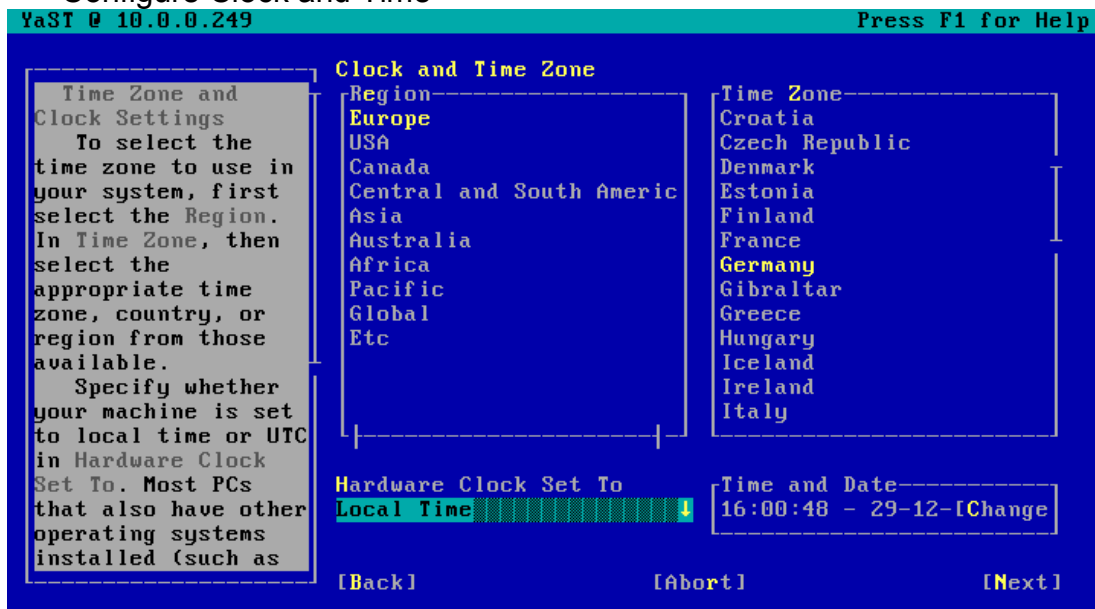
# VHCS Pro 2.4.7 Installation on SuSE 10.0

## 1. Basic installation of SuSE 10.0

- Accept the license

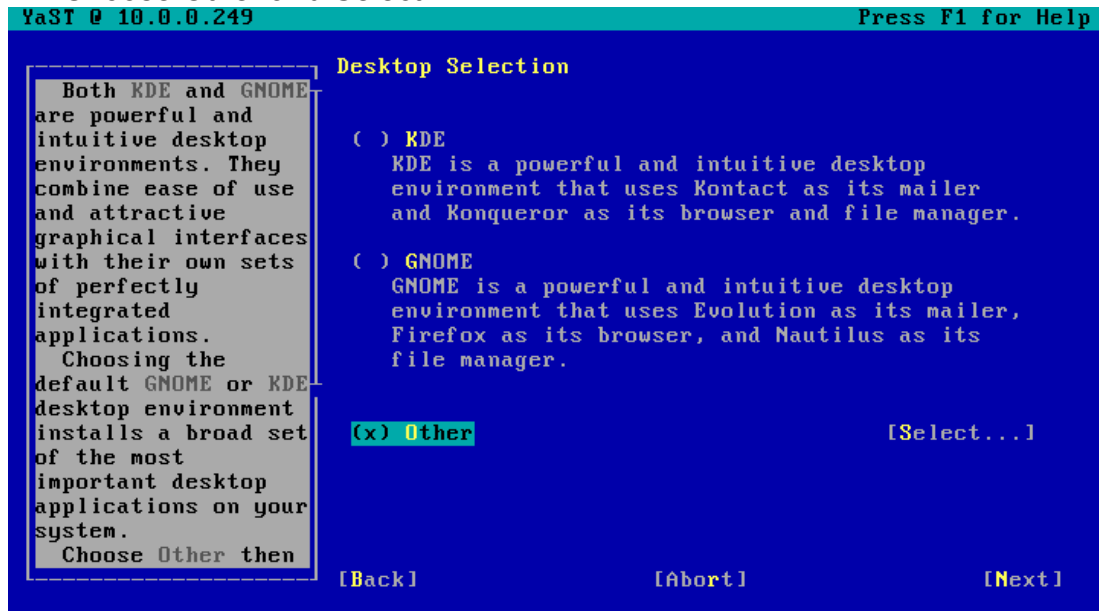


- Configure Clock and Time

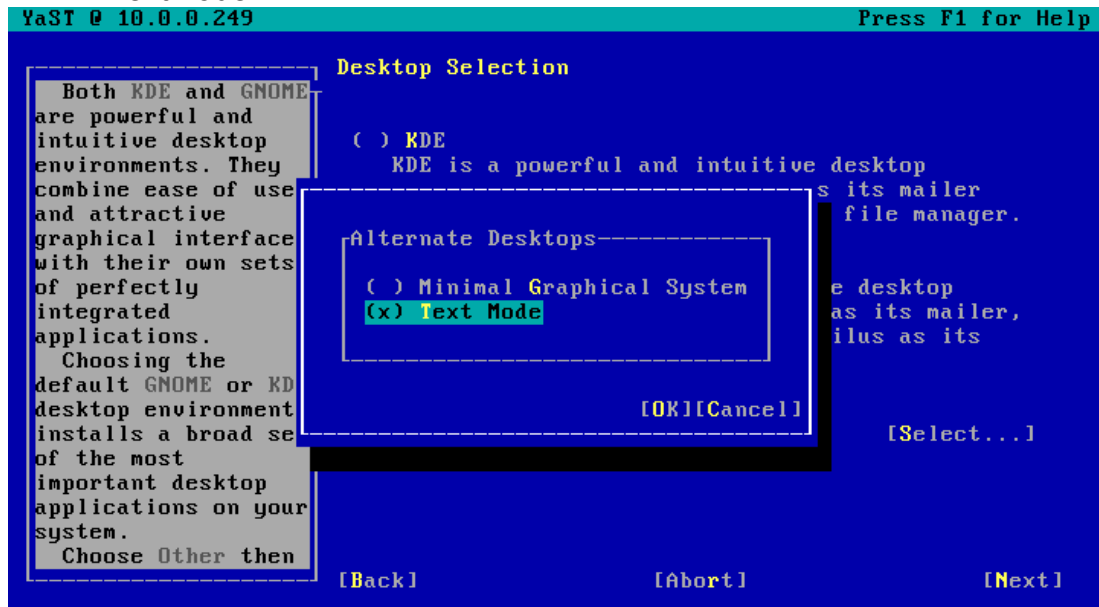


- Packetselection

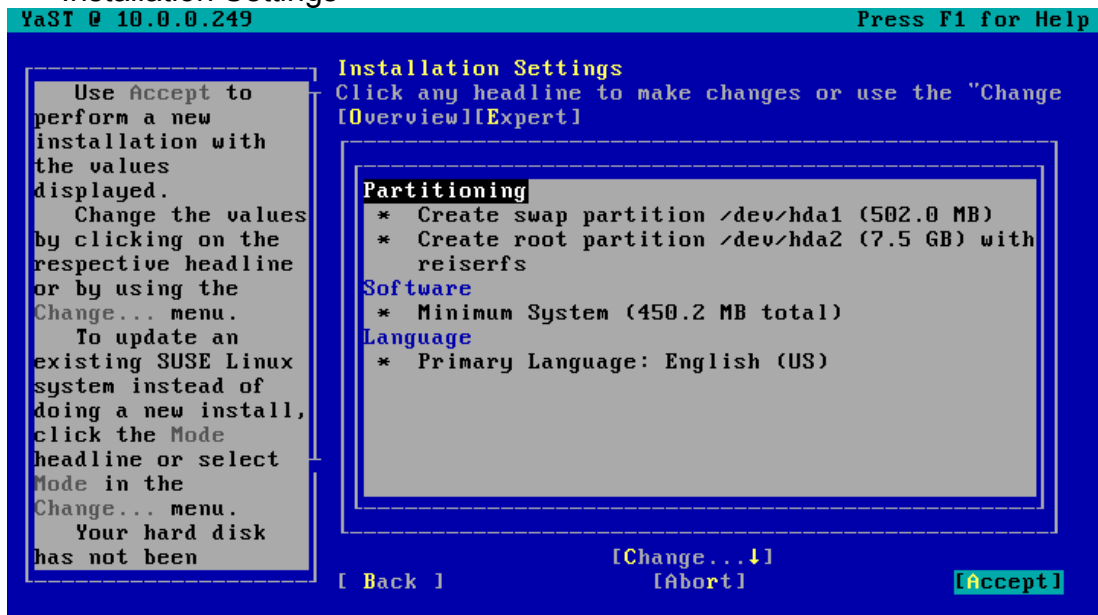
- Choose Other and Select ....



- .... Textmode

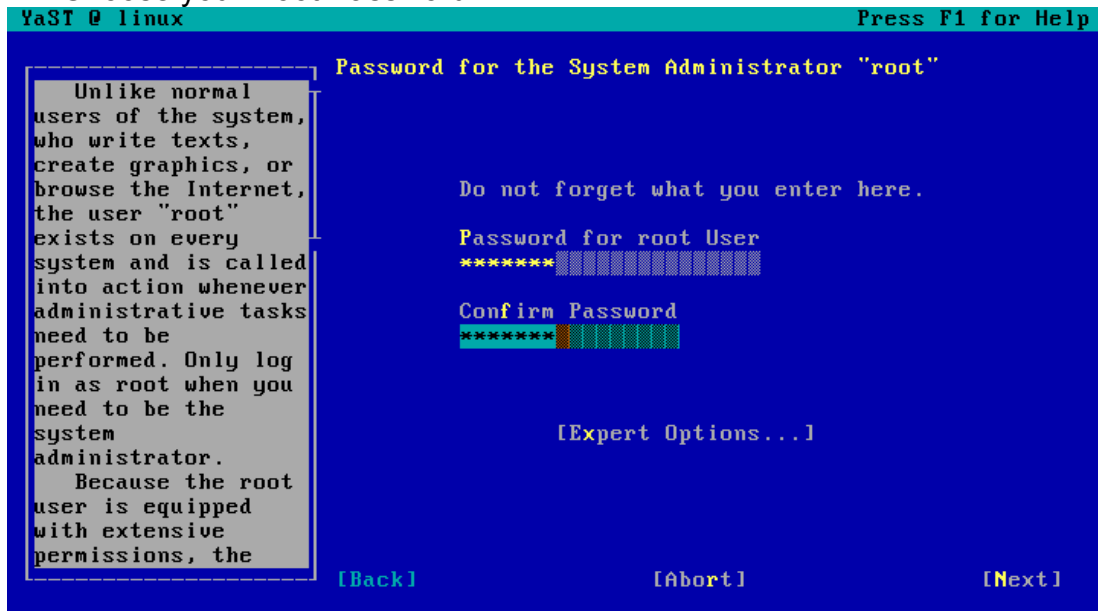


- Installation Settings



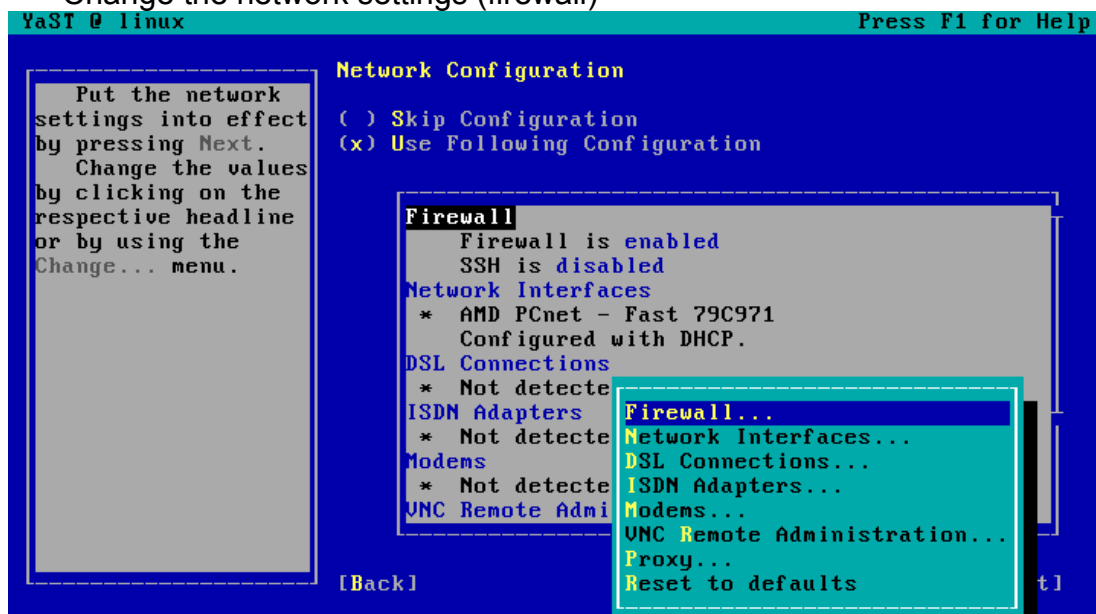
- Installing packages

- Choose your Root Password

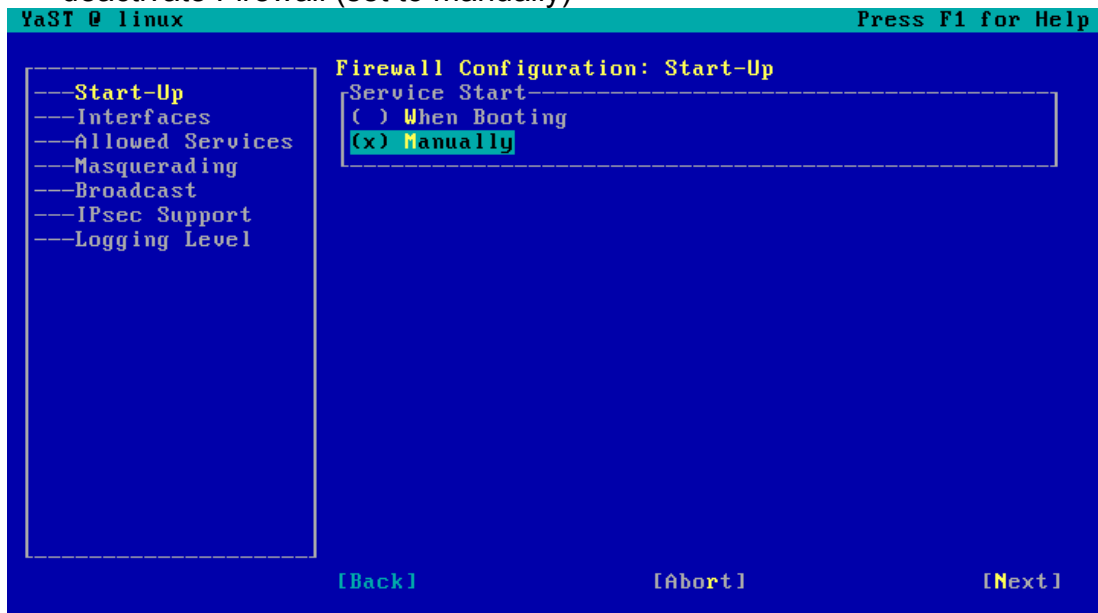


- Accept questions about detection of networkhardware
- Skip detection of DSL, PPPoE and Modems

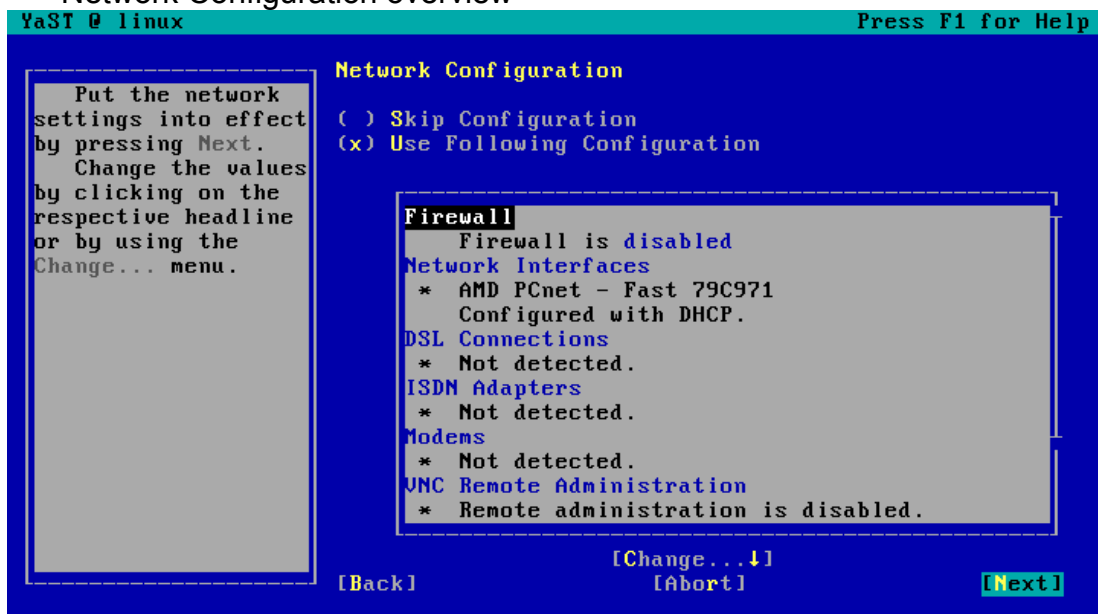
- Change the network settings (firewall)



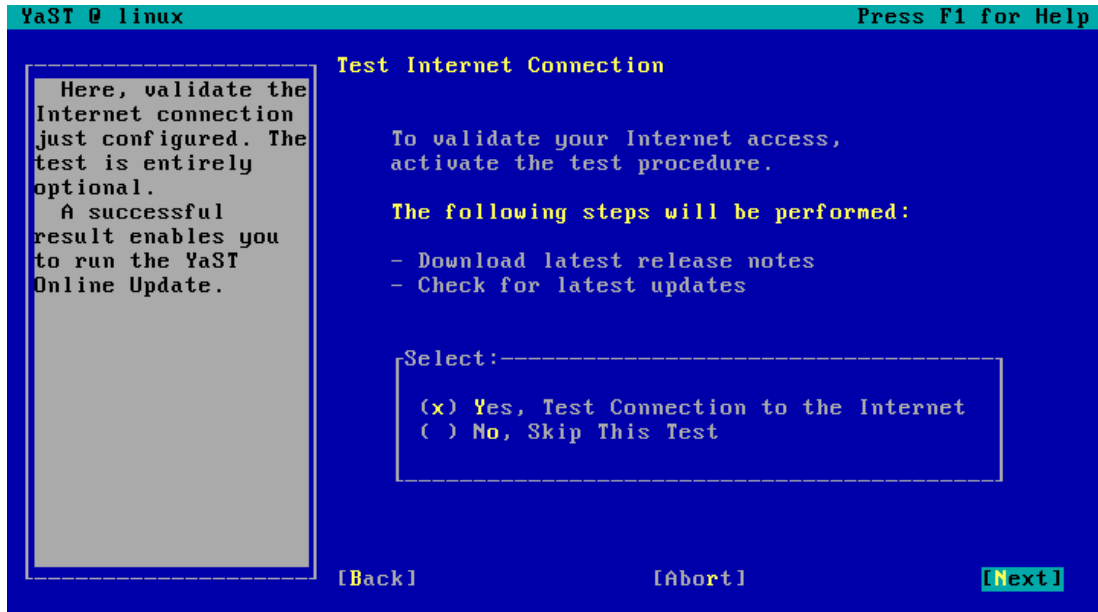
- deactivate Firewall (set to manually)



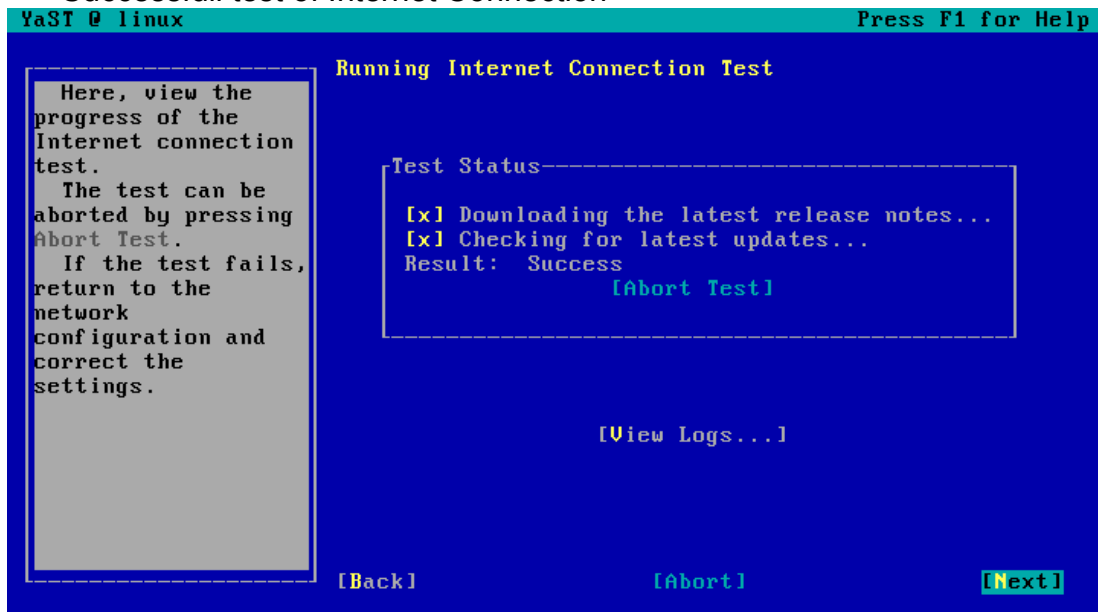
- Network Configuration overview



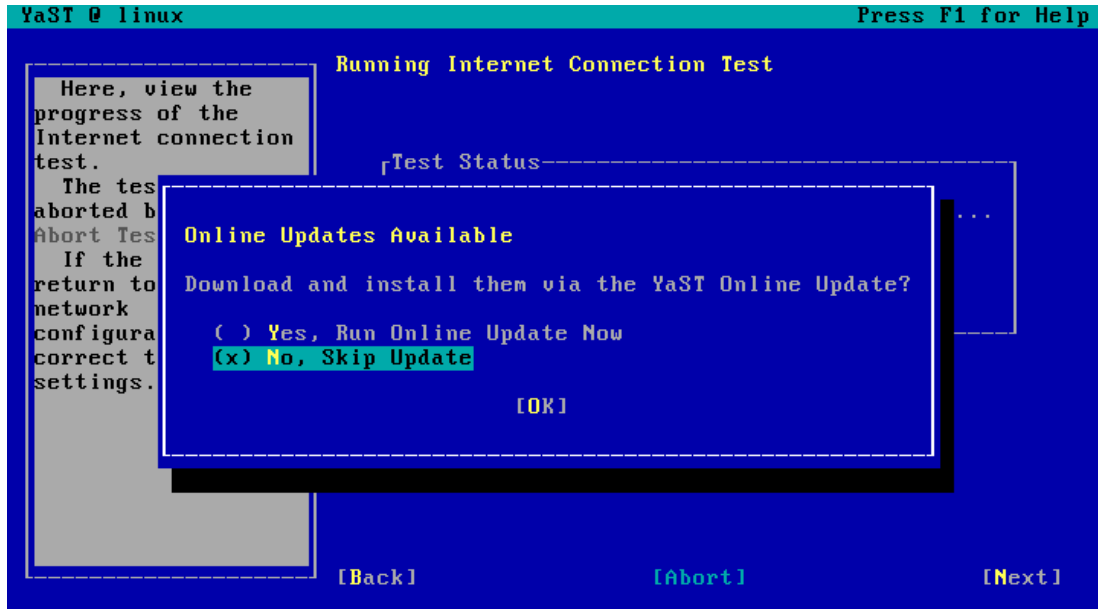
- Test Internet Connection



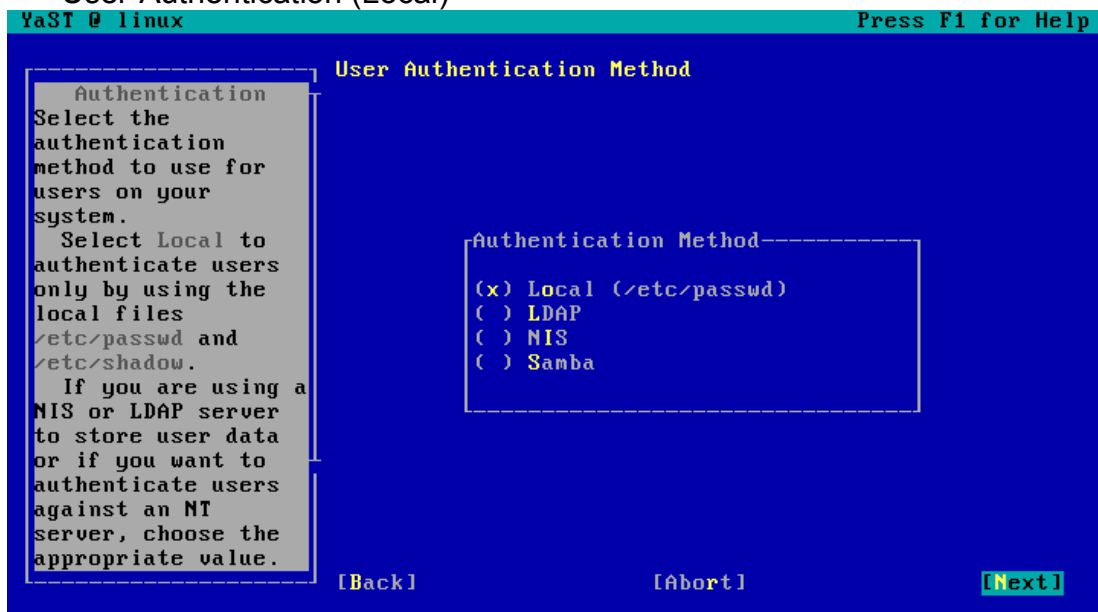
- Successful test of Internet Connection



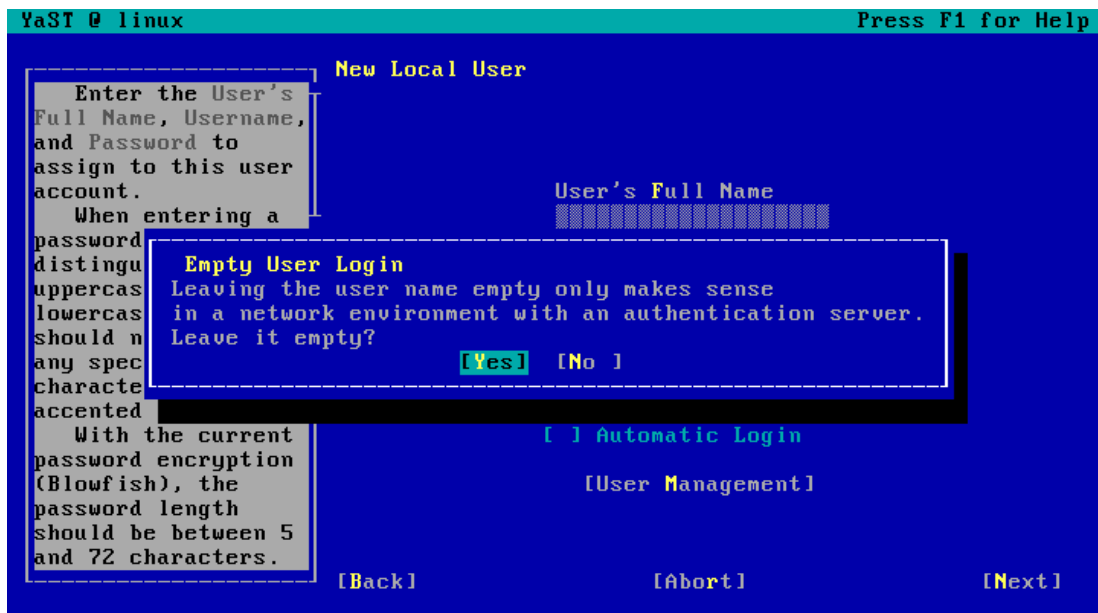
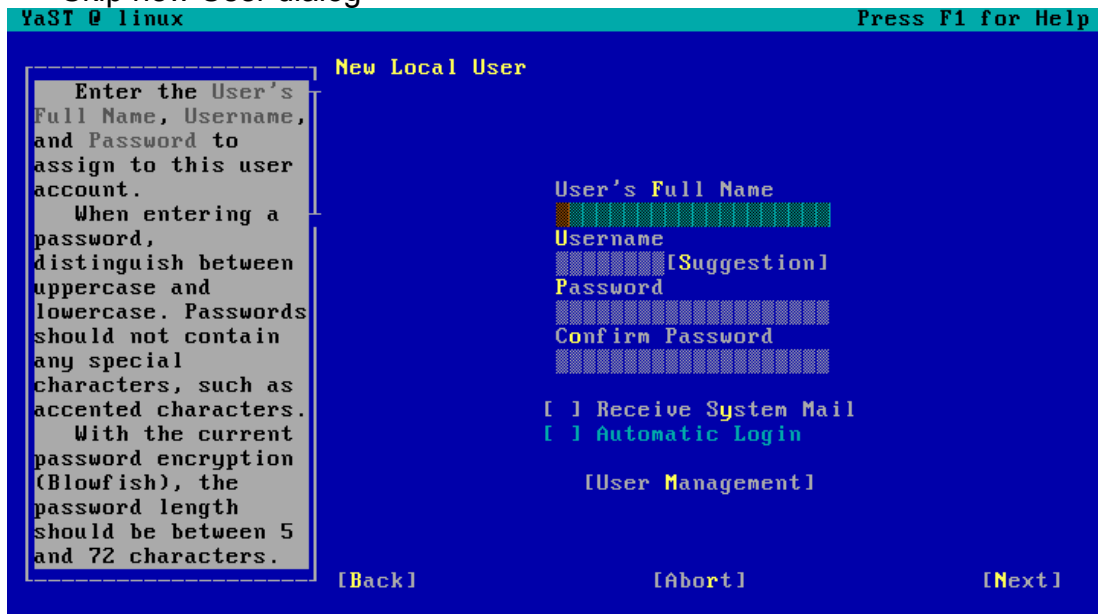
- Do not install package updates now, this should be done after installation of VHCS. More packages will be installed with VHCS which may be also updated with YOU.



- User-Authentication (Local)

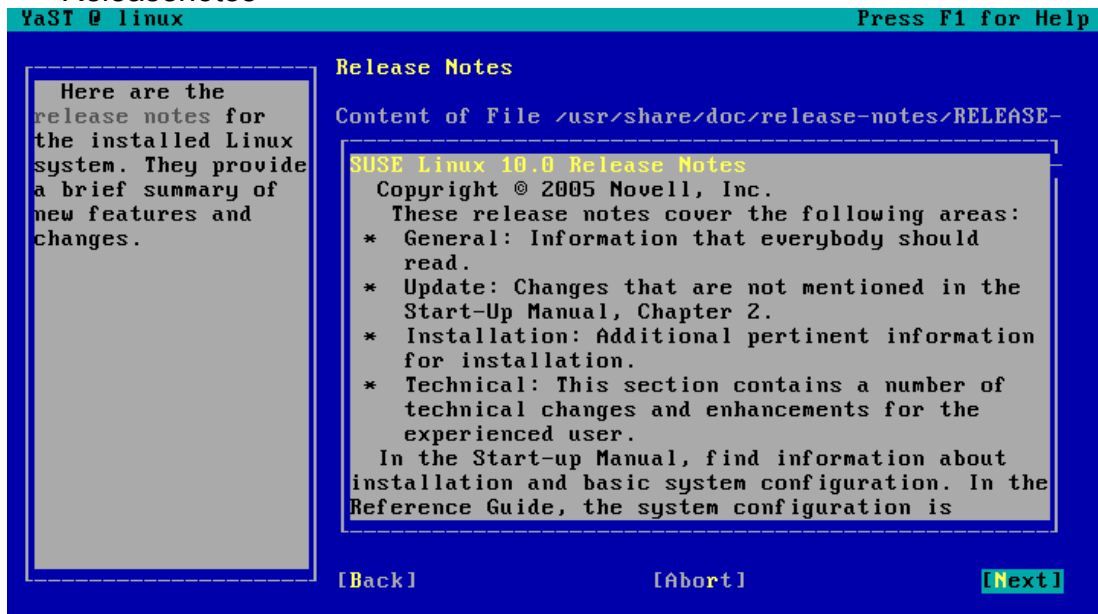


- Skip new User dialog

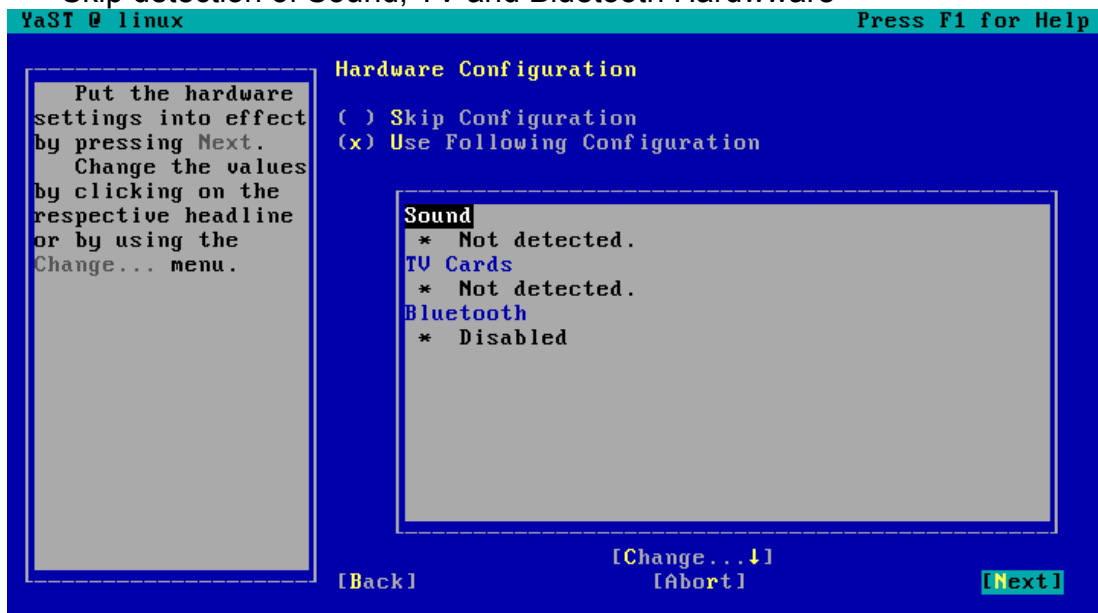




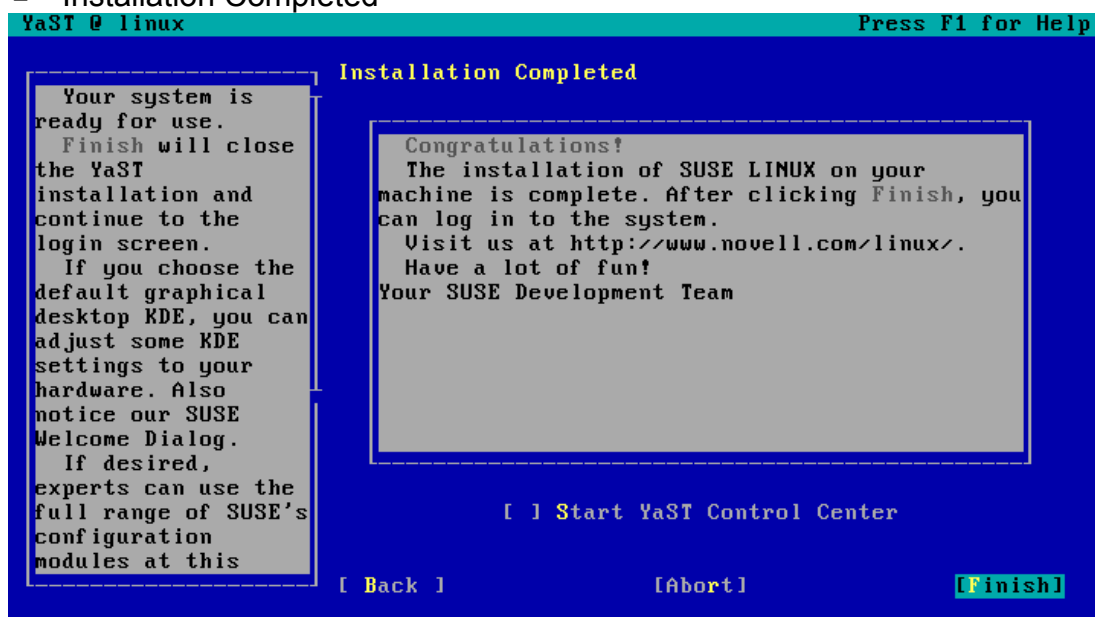
- Releasenotes



- Skip detection of Sound, TV and Bluetooth Hardware

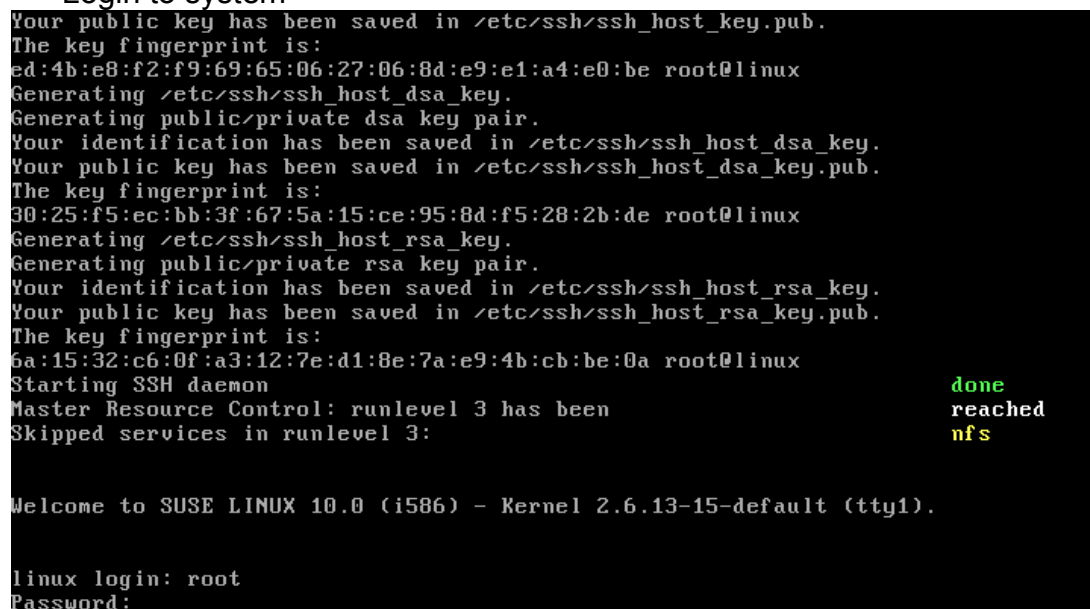


- Installation Completed

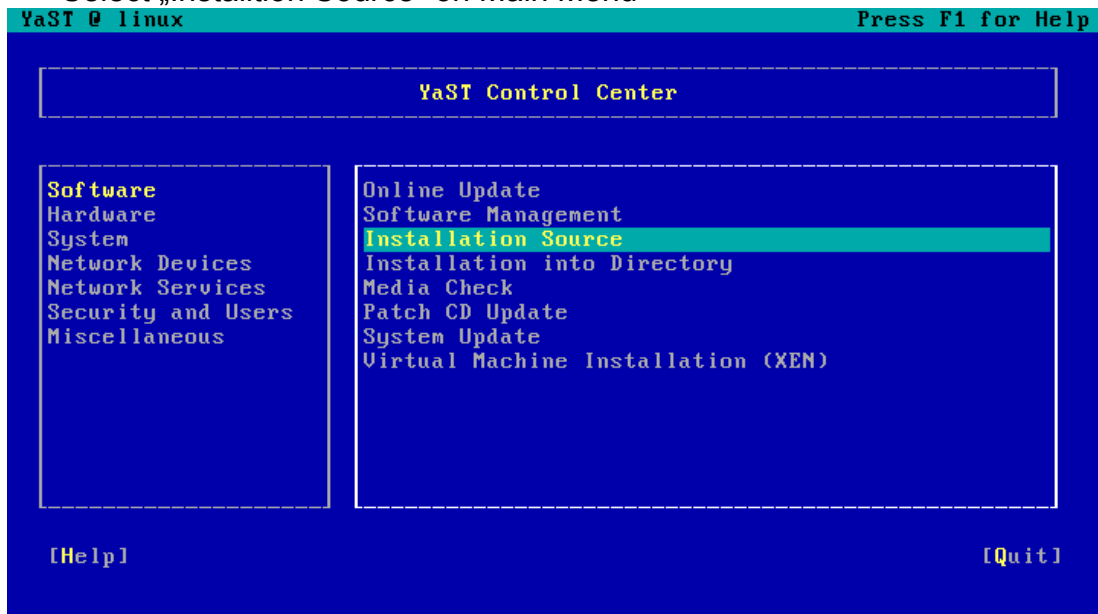


2. Setup VHCS Installation Source

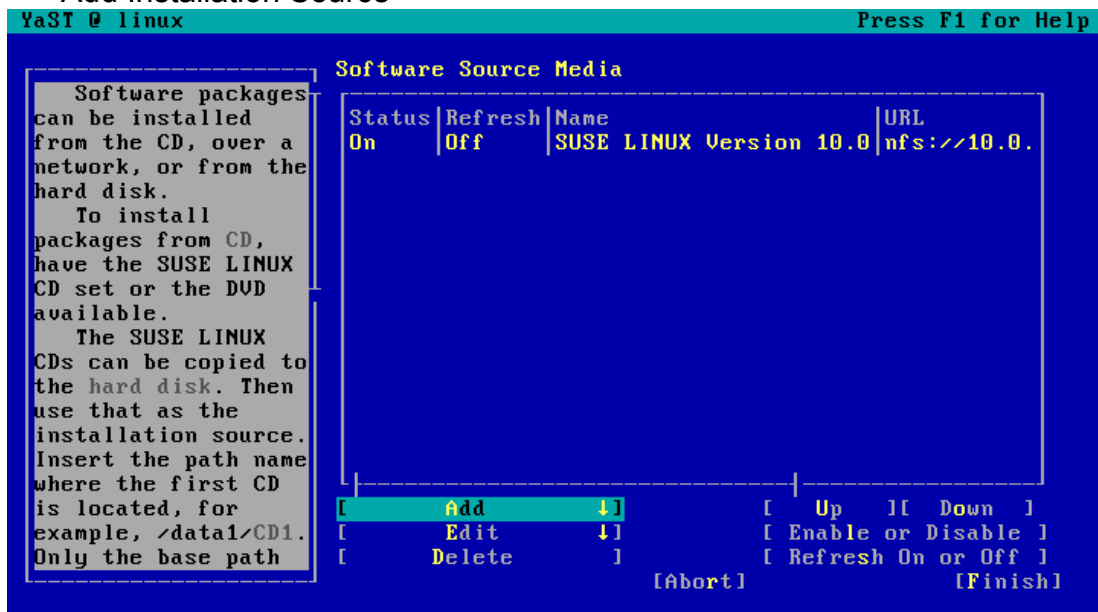
- Login to system



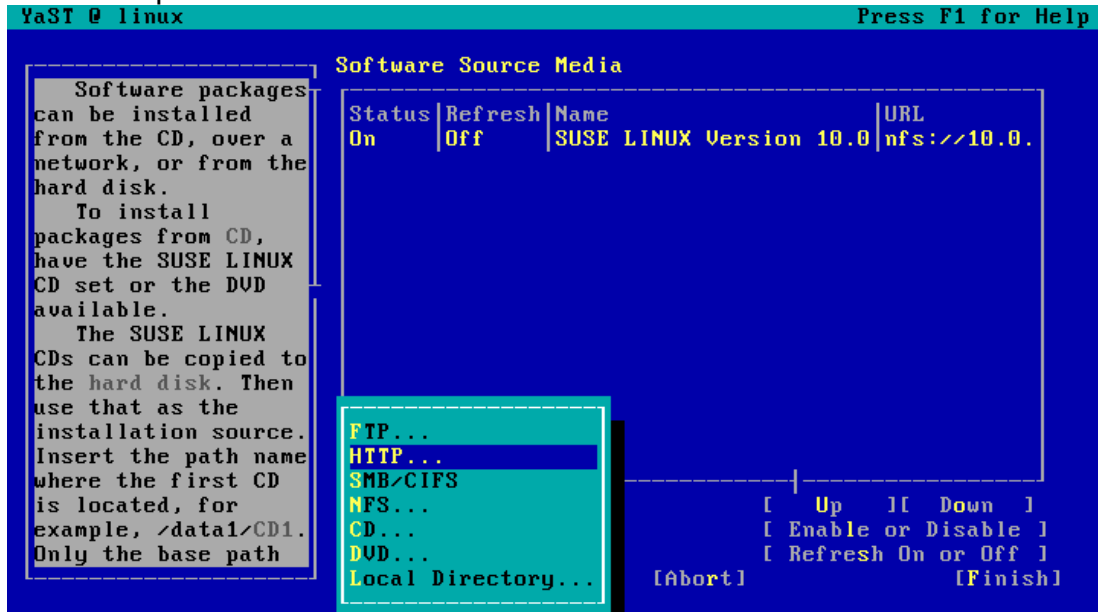
- start YaST (type yast)
- Select „Installation Source“ on Main Menu



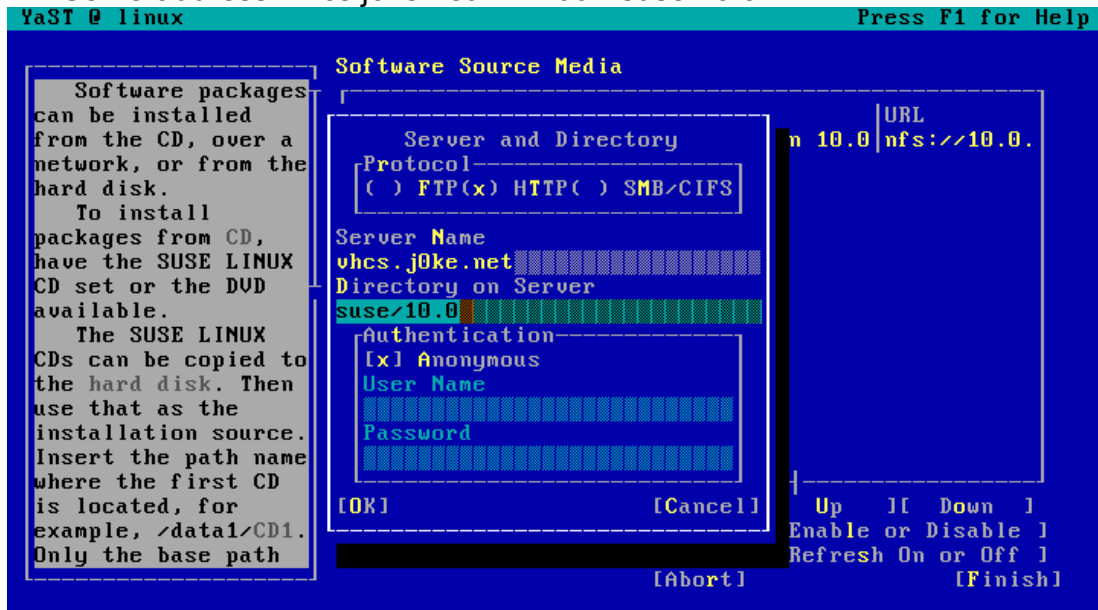
- Add Installation Source



- Serverprotocol -> HTTP



- Serveraddress: vhcs.j0ke.net Path: suse/10.0



- Packagesource Overview

YaST @ linux Press F1 for Help

**Software Source Media**

Software packages can be installed from the CD, over a network, or from the hard disk.

To install packages from CD, have the SUSE LINUX CD set or the DVD available.

The SUSE LINUX CDs can be copied to the hard disk. Then use that as the installation source. Insert the path name where the first CD is located, for example, /data1/CD1. Only the base path

Status	Refresh	Name	URL
On	Off	SUSE LINUX Version 10.0	nfs://10.0.
On	Off	VHCS (SUSE LINUX 10.0)	http://vhcs

[ Add ↓ ]
[ Up ] [ Down ]

[ Edit ↓ ]
[ Enable or Disable ]

[ Delete ]
[ Refresh On or Off ]

[Abort]
**[Finish]**

- Select „Software Management“ on Main Menu

YaST @ linux Press F1 for Help

**YaST Control Center**

**Software**

Hardware

System

Network Devices

Network Services

Security and Users

Miscellaneous

Online Update

**Software Management**

Installation Source

Installation into Directory

Media Check

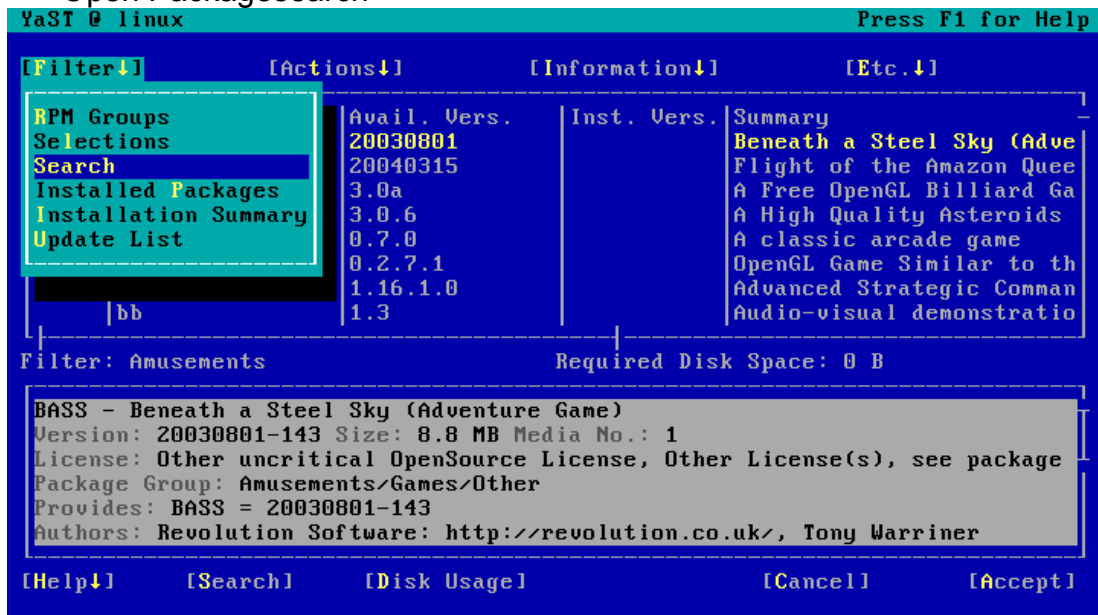
Patch CD Update

System Update

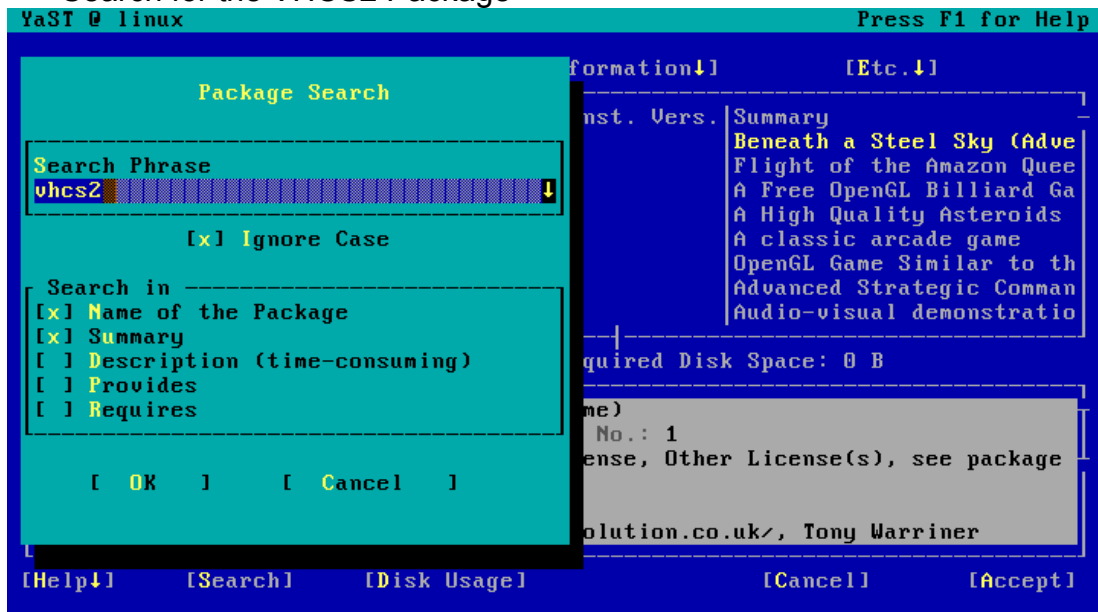
Virtual Machine Installation (XEN)

[Help]
[Quit]

- Open Packagesearch



- Search for the VHCS2 Package



- Searchresult, select the vhcs2 package with space and accept

YaST @ linux Press F1 for Help

[Filter↓]                    [Actions↓]                    [Information↓]                    [Etc.↓]

	Name	Avail. Vers.	Inst. Vers.	Summary
+	vhcs2	2.4.7.0		VHCS -- virtual hosting control system

Filter: Search Results Required Disk Space: 232.7 MB

```

vhcs2 - VHCS -- virtual hosting control system
Version: 2.4.7.0-3.suse100 Size: 21.9 MB Media No.: 1
License: GPL
Package Group: System
Provides: vhcs2 = 2.4.7.0-3.suse100
Authors:
  
```

[Help↓]                    [Search]                    [Disk Usage]                    [Cancel]                    [Accept]

- Packagedependencies will be resolved automatically and need to be accepted

YaST @ linux Press F1 for Help

**Automatic Changes**

In addition to your manual selections, the following packages have been changed to resolve dependencies:

	Name	Avail. Vers.	Inst. Vers.	Summary
a+	<b>NX</b>	<b>1.5.0</b>		<b>Proxy</b>
a+	courier-authlib-userdb	0.57		Userdb
a+	courier-authlib	0.57		Courie
a+	courier-imap	4.0.4		An IMA
a+	fontconfig	2.3.2.20050721		Librar
a+	cyrus-sasl-crammd5	2.1.21		cyrus-
a+	cyrus-sasl-digestmd5	2.1.21		cyrus-
a+	cyrus-sasl-gssapi	2.1.21		cyrus-
a+	cyrus-sasl-otp	2.1.21		cyrus-

[ OK ]                    [ Cancel ]

[Help↓]                    [Search]                    [Disk Usage]                    [Cancel]                    [Accept]

- Installation progress

YaST @ linux Press F1 for Help

Please wait while packages are installed.

### Package Installation

Media	Size	Packages	Time
<b>Total</b>	<b>205.64 MB</b>	<b>137</b>	
SUSE LINUX			
CD 1	180.52 MB	133	
VHCS			
CD 1	25.12 MB	4	

```

~1 plugin for the CRAMMD5 mechanism
fam-2.6.10 (73.23 KB) -- File Alteration Monitoring Daemon
freetype2-2.1.10 (2.00 MB) -- A TrueType font library
gmp-4.1.4 (2.70 MB) -- The GNU MP Library
    
```

gmp-4.1.4 (2.70 MB)

100%

Total

2%

[Back] [Abort] [Next]

- Installation progress

YaST @ linux Press F1 for Help

Please wait while packages are installed.

### Package Installation

Media	Size	Packages	Time
<b>Total</b>			<b>00:00</b>
VHCS			
CD 1	Done.		00:00

```

~6 (724.87 KB)
proftpd-1.2.93_1.3.0rc3 (3.15 MB) -- ProFTPD -- Professional FTP Server.
Downloading vhc2-2.4.7.0-3.suse100.i586 (3.86 MB)
vhc2-2.4.7.0 (21.92 MB) -- VHCS -- virtual hosti
    
```

vhc2-2.4.7.0 (21.92 MB)

31%

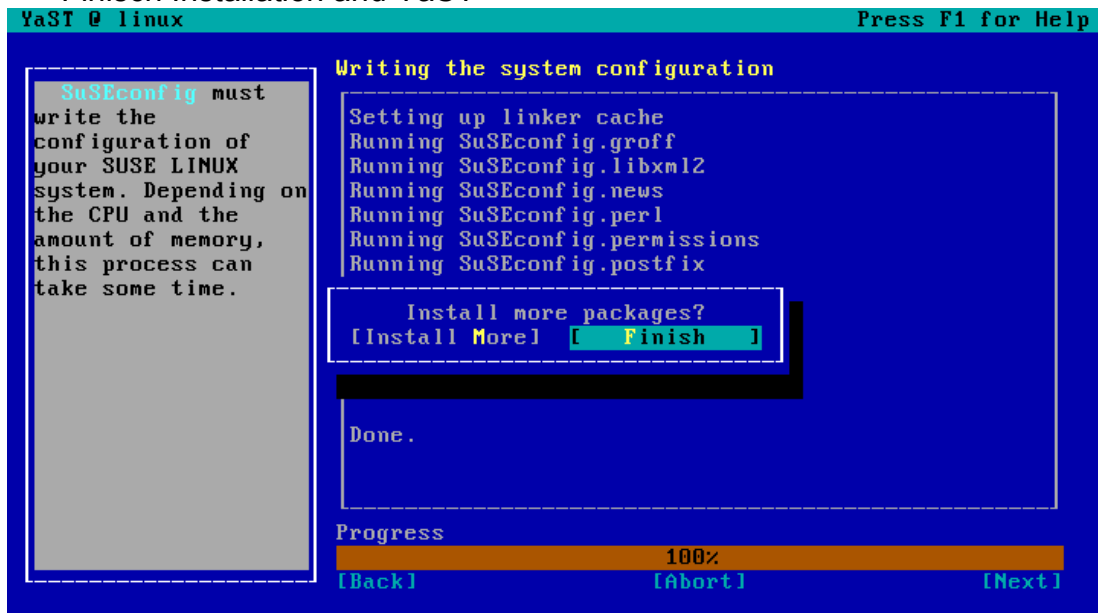
Total

100%

[Back] [Abort] [Next]



- Finisch Installation and YaST



- After installation you should specify a mysql root password:

Command: `mysqladmin password <new-password>`

- The next step is the run of `vhcs2-setup`



```
Welcome to VHCS2 '2.4 Spartacus' Setup Dialog.
```

```
This program will set up VHCS2 system on your server.
```

```
Please press 'Enter' to continue.
```

```
Please enter system hostname (Enter for defaults) [linux]:
```

```
Please enter system network address (Enter for defaults) [10.0.0.251]:
```

```
Please enter SQL server host (Enter for defaults) [localhost]:
```

```
Please enter system SQL database (Enter for defaults) [vhcs2]:
```

```
Please enter system SQL user (Enter for defaults) [root]:
```

```
Please enter system SQL password (Enter for defaults) [none]:
```

```
Please repeat system SQL password:
```

```
Please enter VHCS ftp SQL user (Enter for defaults) [vftp]:
```

```
Please enter VHCS ftp SQL user password (Enter for defaults) [none]:
```

```
Please enter administrator login name (Enter for defaults) [admin]: _
```

```
Please enter system hostname (Enter for defaults) [linux]:
```

```
Please enter system network address (Enter for defaults) [10.0.0.251]:
```

```
Please enter SQL server host (Enter for defaults) [localhost]:
```

```
Please enter system SQL database (Enter for defaults) [vhcs2]:
```

```
Please enter system SQL user (Enter for defaults) [root]:
```

```
Please enter system SQL password (Enter for defaults) [none]:
```

```
Please repeat system SQL password:
```

```
Please enter VHCS ftp SQL user (Enter for defaults) [vftp]:
```

```
Please enter VHCS ftp SQL user password (Enter for defaults) [none]:
```

```
Please enter administrator login name (Enter for defaults) [admin]:
```

```
Please enter administrator password:
```

```
Please repeat administrator password:
```

```
Please enter administrator email address: vhcs2@example.tld
```

```
0700 root:root /srv/www/vhcs2/engine/vhcs2-dmn-mngr
0700 root:root /srv/www/vhcs2/engine/vhcs2-sub-mngr
0700 root:root /srv/www/vhcs2/engine/vhcs2-als-mngr
0700 root:root /srv/www/vhcs2/engine/vhcs2-htuser-mngr
0700 root:root [/srv/www/vhcs2/engine/backup]
0700 root:root /srv/www/vhcs2/engine/backup/vhcs2-bk-task
0700 root:root /srv/www/vhcs2/engine/vhcs2-mbox-mngr
0700 root:root [/srv/www/vhcs2/engine/traffic]
0700 root:root /srv/www/vhcs2/engine/traffic/vhcs2-vr1-traff
0700 root:root /srv/www/vhcs2/engine/traffic/vhcs2-vr1-traff-SUSE
0700 root:root /srv/www/vhcs2/engine/traffic/vhcs2-srv-traff
0700 root:root /srv/www/vhcs2/engine/vhcs2-db-keys.pl
0700 root:root /srv/www/vhcs2/engine/vhcs2-db-passwd
0700 root:root /srv/www/vhcs2/engine/vhcs2_common_code.pl
0700 vmail:mail [/srv/www/vhcs2/engine/messenger]
0755 root:root [/srv/www/vhcs2/engine/messenger]

Congratulations !

VHCS2 '2.4 Spartacus' Setup completed successfully !

Please type http://10.0.0.251/vhcs2/ in your
browser!

linux:~ # _
```

- After installation you should reboot the system, so all services are started correctly.